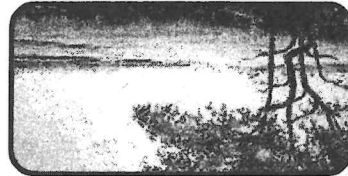


NON-PROFIT ORG
US POSTAGE
PAID
CHARLESTON SC
PERMIT NO 437

Edisto Island Open Land Trust
P.O. Box 1
Edisto Island, SC 29438



BUSINESS PROGRAM MEMBERS

BUSINESS PARTNER

Paradise Shrimp Farms of SC
Fairfield Communities Inc.
Fairfield Property Owners Association

BUSINESS SPONSOR

Dock Side Restaurant

BUSINESS MEMBER

Anderson Well Drilling
El-Sue, LLC
Robert Frank Landscaping
Kennerty Surveying, Inc.
Thomas C. Kontinos, CPA
J. Sam Plexico & Associates
Steedley Naturescaping, LLC
Sunset Associates
Village Mortgage Inc.

WELCOME NEW BUSINESS PROGRAM MEMBERS!

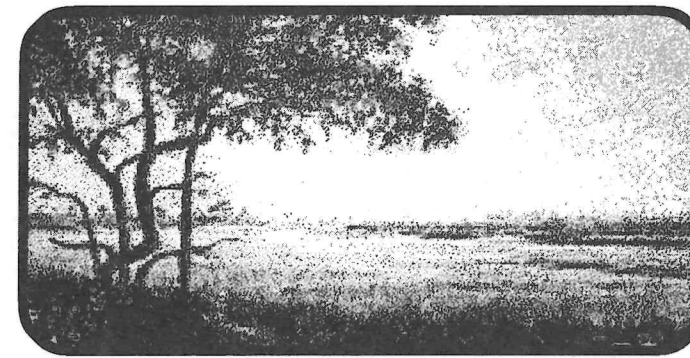
Business Partner

Paradise Shrimp Farms of SC
Robert W. Underwood, Principal
Jerome Singleton, Site Manager
3465 Highway 174 • Edisto Island, SC 28438
(843) 869-3675
paradiseBZ@aol.com

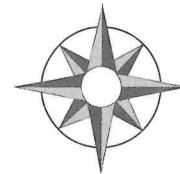
Business Members

Thomas C. Kontinos, CPA
547 Highway 174 • P.O. Box 400 • Edisto Island, SC 29438
(843) 869-3252 • (843) 869-2196 (fax)
kotinos@worldnet.att.net

Steedley Naturescaping, LLC
Scott Steedley
8458 Middleton Point Lane
Edisto Island, SC 29438
(843) 869-4480 (fax/tel) • (843) 509-1296 (mobile)
steedleynaturescaping@msn.com



Tidal Tales



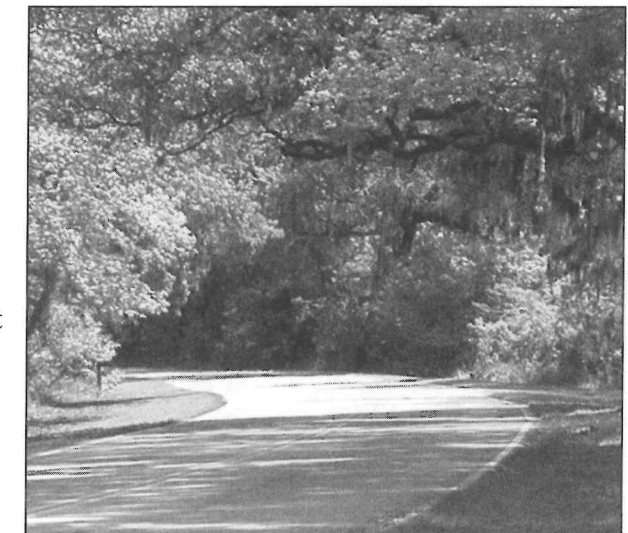
EDISTO ISLAND OPEN LAND TRUST

...TO PRESERVE AND PROTECT THE SCENIC VIEWS AND VISTAS OF EDISTO ISLAND

SPRING 2003

A LEGACY OF LIVE OAKS

Live oaks (*Quercus virginiana*) draped in Spanish moss are one of Edisto's enduring images. Lining the historic roads of Edisto Island, these sentinels of history are unique to the coastal south-east. Revered and memorable, they grow strong, bent to decades of sun and storms. They epitomize, for many, the strength and resilience that graces the land and people of this region.



The "Legacy of Live Oaks" program gives you a way to honor family members and friends while contributing to Edisto's historic beauty. With your contribution, a live oak will be planted along Highway 174 on Edisto Island in their honor. By dedicating a live oak for planting, you do more than enhance the beauty of Scenic Highway 174 today – you help insure our island's future beauty. Over the years, these trees will grow to create the sheltering canopy that we see today along many of Edisto's road. This is a lasting way to honor those who give meaning to our lives while perpetuating a legacy for the future.

with a height of 12-15 feet when planted. Our goal is a minimum of 25 trees to be planted in the prime planting season of this year (October – December.) The trees will be watered and maintained to give them a good start in their permanent home along Highway 174.

If you are interested in giving a gift of a Legacy Live Oak, please use the enclosed envelope or contact us at (843) 869-9004 or by email at eiolt@mindspring.com. Each Legacy Live Oak dedicated is \$500, and is a charitable contribution.

Your legacy gift will be recognized in Edisto Island Open Land Trust publications and in permanent signage at the Edisto Island Open Land Trust's Memorial Site (protected King's Highway site just north of Botany Bay Road, near the Serpentarium.) We plan to place a special memorial bench there to give visitors a place of repose. *

EDISTO ISLAND OPEN LAND TRUST

BOARD OF TRUSTEES

I. Jenkins Mikell, Jr., President
William F. Thompson, Jr.,
Vice-President
Ellen E. Unger, Treasurer
David L. Lybrand, Secretary
John H. Boineau
Marian D. Brailsford
Alex S. Crawford, Jr.
Madeline H. Huffines
James O. Kempson, Jr.
Robert E. Lee, Jr.
Rev. Albert C. Morrison
Chalmers W. Poston, Jr.
Edward K. Pritchard III
Fisher C. Walter, Jr.

James A. Rice, ex-officio
Lawrence A. Savage, ex-officio

STAFF

Rhet Wilson, Executive Director
Ida Tipton, Office Manager

806-B Oyster Park
Post Office Box 1
Edisto Island, SC 29438

Phone: (843) 869-9004
Fax: (843) 869-7820
eiolt@mindspring.com
www.edisto.org

Edisto's Endangered Areas

*We want to hear
from you!*

What area of Edisto do you want to protect? Do you have a favorite road, marsh or wood that your Edisto can't do without?

We'll publish your choices in the next issue of Tidal Tales (your name won't be published).

Please email us at eiolt@mindspring.com or call (843) 869-9004.

Did You Know?

South Carolina residents surpass the national average in charitable donations as a percentage of individual income, according to a report being released by the S.C. Association of Non-profit Organizations. State taxpayers gave an average about 4.5 percent of their incomes to charity. The national average is 3.5 percent of income.

Our wish List:

Handheld GPS ;
Duplex attachment for printer;
Volunteers to install signage

SAVE LAND - SAVE MONEY

Giving land into perpetual protection is becoming irresistible. In early April 2003, the Senate passed a new bill, "CARE" (S 476), that includes incentives for landowners who donate conservation easements or who sell their land to a conservation organization. The bill needs House approval before it becomes law.

"These incentives will help farmers, ranchers, and other landowners who want to protect their land from development," noted Land Trust Alliance (LTA) President Rand Wentworth. "The Senate recognizes that private, voluntary land conservation offers the best hope for protecting the American landscape. These new tax benefits will dramatically increase the number of landowners who will choose to conserve their land."

The bill will allow landowners who donate a conservation easement to deduct the value of their gift over 16 years rather than the six years previously permitted. It also increases the amount that can be deducted in any one year from the current 30 percent of the donor's income to 50 percent, with provisions allowing farmers and ranchers to deduct all of their income under certain circumstances. In no case can the deduction exceed the appraised value of the gift. The bill would cut capital gains tax by 25 percent on sales of land or conservation easements to a conservation charity or government agency.

Information is from The Land Trust Alliance, www.lta.org. For more information, contact the Edisto Island Open Land Trust. *

EDISTO NIGHTS

ARE QUIET . . . AND DARK

What are Edisto nights to you? Perhaps you think of the moonlight on water or stars sparkling overhead. You may recall the sounds of Chuck-will's widows and owls hunting their night prey. See phosphorescence in the waves. A female Loggerhead turtle crawling onto the beach. Hatchlings dashing to the sea.

In many communities and on many streets, the dark of night is kept at bay by lights – safety lights, yard lights, house lights, porch lights, street lights, dock lights. Since 1996, the Edisto Island Open Land Trust has worked to have dock lights and street lights shielded and directed downward where the light is needed. It's a move that can save money and wildlife. The Edisto Beach Turtle Patrol and concerned residents have campaigned to keep "Lights Out" on the beach at night so that sea turtle hatchlings can find their way to the ocean and not the roadway. Just one light can result in hundreds of hatchlings being lost.

As increasing urban glare across the planet spills into the night sky, even the most stringent local efforts need to be supplemented by regional, national and even international efforts. If you've see a photo mosaic map of



the Earth at night, the problem is apparent. Studies have indicated that nearly 1/3 of outdoor lighting is going into the sky at a cost of perhaps \$1.5 billion per year.

Like the land and waterways of Edisto, its sky is a rare treasure to be protected. By honoring the beauty of the night and day, we can help protect this island's future and its wildlife. So keep your lighting low and directed where you want it to go! Shielded and low energy option lights are widely available.

For more information, contact the Edisto Beach Turtle Patrol at <http://www.angelfire.com/sc3/turtle>. For information on international efforts to protect the night sky and outdoor lighting options, try visiting the website, www.darksky.org.

Thank you to Edwin Gardner for his assistance. *

LAND CONSERVATION PROSPERS

With the passage of the SC Conservation Incentives Tax Act in 2001, a new era began in land conservation on the coast. Its effects are being seen in the expansion of protected areas of our coast. Perhaps you noticed new US Fish and Wildlife property markers on Highway 174 before coming onto Edisto Island (the acreage is between Highway 162 and Toogoodoo Road.) You are seeing the first new expansion of the ACE Basin Refuge since 1995. Seven hundred acres of former timberland were purchased by the US Fish and Wildlife Service with assistance from The Nature Conservancy. The habitat is being managed for native species with emphasis for neotropical songbird migrants

including painted buntings, tanagers, and prothonotary warblers- some of the most striking and colorful birds of the coast.

Donors in South Carolina can now protect their property and receive both federal and state incentives. If your donation meets federal guidelines, you can qualify for tax credits on your South Carolina income taxes. These credits are good forever. They can be assigned, transferred to others and sold. You can get tax credits up to 25% of your federal deduction, or limited to \$250 per acre of land under easement, whichever is less. You can use up to \$52,500 in credits each year. For example, if your qualified federal tax deduction were \$300,000 on 100

acres (the difference between the fair market value of your land before and after the easement is placed on it), then:

Federal tax deduction: \$300,000
25% of federal tax = \$75,000
Cap of \$250 per acre for your tax credit \$25,000 (100 x \$250 = \$25,000)

Those who love Edisto have already protected about 12,000 of the island's 45,000 acres. That leaves over 33,000 acres to go. If you'd like to join in the movement to protect your family land, the Edisto Island Open Land Trust can help you. We work with owners of large and small properties to help you protect your family land. *

SOUTHEAST LTA DIRECTOR VISITS EDISTO ISLAND OPEN LAND TRUST

At the first meeting of the 2003 Board of Trustees, Kevin Brice, Executive Director of the Southeast Land Trust Alliance office spoke with Trustees and presented information on regional and national land trust activity. The Board

reviewed the work and priorities of the Edisto Island Open Land Trust. After the meeting, Kevin described the Edisto Island Board of Trustees as "an energetic, passionate group" and stated, "I am sure EIOLT will accomplish much." *

EDISTO ISLAND OPEN LAND TRUST DEDICATED FUNDS

The Edisto Island Open Land Trust is budgeted to operate on about \$90,000 this year. This budget covers expenses, personnel and reserve operating fund costs. Much of this is raised from grants, memberships and events.

But the deep work of the Edisto Island Open Land Trust is much more than running the office, doing newsletters, programs and writing grants. It is saving land – protecting it so that it is there for future generations.

The Edisto Island Open Land Trust has four dedicated funds that help it do its fundamental work:

The Litter and Beautification Fund - to protect and enhance the beauty, land, and open space on Edisto Island with highest priority on

Highway 174. For example, the Highway 174 Litter pick-up is supported through this fund.

The Stewardship Fund - for easement monitoring, enforcement and maintaining land assets. Funds from this account recently covered the cost of replacing a water control structure (and thank you to those who helped with that cost!)

The Acquisition Fund - to protect land that meets the Land Trust's acquisition criteria. If a prime piece of property is identified, this fund provides the means to purchase it or the conservation rights to it.

If you are interested in giving an additional gift to support a specific fund, please indicate so on your enclosed donation envelope. Thank you! *

SAVE THESE DATES FOR 2003 LAND TRUST EVENTS

November 9, Sunday
Fall Oyster Roast
An Edisto tradition with views of marsh and sky, come enjoy one of the area's finest delicacies with your friends.

December 14, Sunday
Brunch at Brooklands
In full holiday splendor, Brooklands will be open for the Land Trust's guests to enjoy its renovated, landscaped beauty.

And watch for our
September Shrimp Special!

(all events subject to change)