

Edisto Island Open Land Trust
P.O. Box 1
Edisto Island, SC 29438



NON-PROFIT
US POSTAGE
PAID
CHARLESTON
PERMIT NO. 7

GET YOUR TIX

EDISTO ISLAND OPEN LAND TRUST OYSTER ROAST & ANNUAL MEETING

2 P.M. SUNDAY, NOV. 16, 2008

Once again we will gather at Sand Creek Farm to:

Celebrate what we've accomplished together
Get the scoop on the "OVER THE TOP by 2010" strategy
Share fellowship with family and friends
Enjoy the best Lowcountry "eats" on earth

Tickets for members - \$25; others \$35; kids \$10

Deadline to reserve or charge tickets is Nov. 7, 2008

Call (843) 869-9004 or

mail your check to EIOLT P. O. Box 1, Edisto Island, SC 29438

Our thanks to

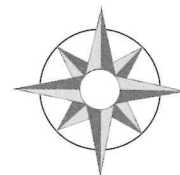
*Premier Corporate Sponsor Edisto Realty • Oyster Roast Sponsor Enterprise Bank of South Carolina
Hosts Anne and Lex Crawford*



ie Walter with her dad, EIOLT Board Member
her Walter, Jr.



Tidal Tales



EDISTO ISLAND OPEN LAND TRUST

... To preserve and protect lands, scenic vistas, heritage, and conservation resources of Edisto Island

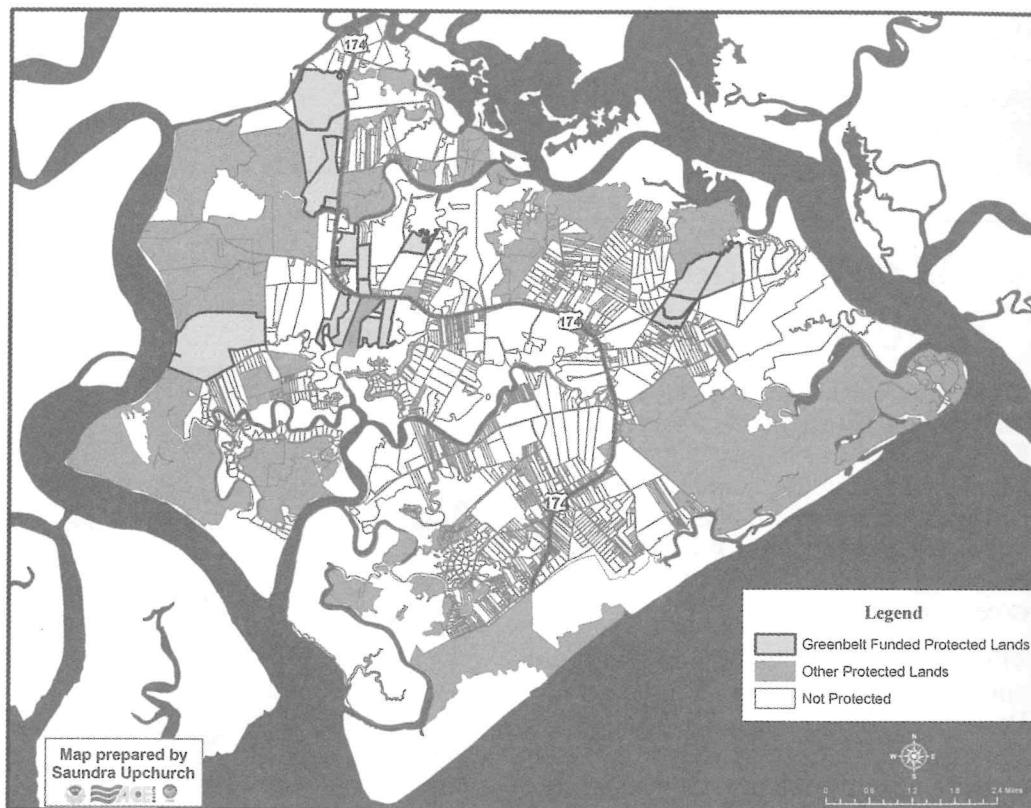
FALL 2008

Paradise Shrimp Farm Preserved

Crossing over the McKinley Washington Bridge onto Edisto Island always brings a sigh of relief. You breathe in the rich aromas of pluff mud along the Dawhoo River's vast expanse of marshlands and you are reminded that you are home!

But, until recently, this sigh of relief was followed by the nagging worry that the nearby Paradise Shrimp Farm property would be lost to development. At one point, the abandoned tract was slated for a high-density subdivision of 65 homes and condos with a locked harbor and marina.

Now, the 500+ acre Paradise Shrimp Farm has become the largest tract ever conserved by EIOLE, bringing the total acres under our protection to more than 1,700. A critical piece of Edisto's conservation jigsaw, this property is strategically located directly across the Intracoastal Waterway from the ACE Basin National Wildlife Refuge and adjacent to numerous protected Edisto tracts.



Saving Paradise Shrimp Farms didn't happen overnight. For five years, EIOLE persisted in trying to find a better alternative than high-density development. Finally in August, EIOLE purchased a conservation easement on the property at a "bargain sale price." The money came from grants awarded by the Charleston County Greenbelt Bank and the South Carolina Conservation Bank. On the land was encumbered with the easement, EIOLE purchased title to the property and re-sold it to a group of conservation buyers who are committed to protecting Edisto's rural character. The new owners are in the process of restoring the land from a wild "moonscape" to a natural greenscape.

Marian Brailsford, EIOLE Executive Director, credits the Charleston County Greenbelt Bank and the South Carolina Conservation Bank for this success. "Without their help, this property and numerous other tracts on Edisto could never have been preserved," she states. "The conservation of Paradise Shrimp Farm is a dream our members never let die. Now the gateway to Edisto Island will always be green, and we can all breathe a permanent sigh of relief when we cross the bridge."

Greenbelt Bank a Godsend for Edisto Conservation

The Charleston County Greenbelt Bank's website address tells its story in a nutshell: www.smallchangeforbigchange.org.

The "Small Change" is the half-cent sales tax increase that was approved by voters in a county-wide referendum in 2004.

for a LIMITED TIME Only!

An Offer You Can't Refuse

You may be thinking of putting a conservation easement on your property . . . someday. Today should be NOW, if you want to take advantage of a limited time opportunity to protect the land you love. With a conservation easement:

- You retain title to the property and your rights to use the property as you always have
- You can sell the property or pass it on to your heirs (the conservation easement goes with the title)
- You only relinquish certain development rights that you and the Land Trust agree upon together
- **If you donate a conservation easement on your property BEFORE December 31, 2009, you can enjoy expanded income tax benefits.**

Through the end of 2009 the federal income tax deduction is 50 percent of the landowner's adjusted gross income the year he donates the conservation easement and each subsequent year for up to 15 years, or until the easement value is paid up. If most of his income is from farming or forestry, he can deduct 100 percent of his income each year for up to 10 years.

Conservation easement takes time. Call EIOLT today to find out how to get started taking the steps to preserve your family land. Phone (843) 869-9004.

Waves, Woods and Wildlife took Adventurers "Back to Nature"

More than 230 kids and adults joined expert tour leaders on May 17 for EIOLT's "Back to Nature Celebration." Equipped with paddles, cameras, nets, fishing gear, hiking shoes, binoculars, and bug spray, participants enjoyed 17 outings on EIOLT's preserved lands and surrounding creeks and rivers.

Tour leaders, who donated their time and expertise, included Dr. Richard H. Her, Susan Roberts, Dr. Sid H. Hreaux, Dean Harrigal, Meg Hoyle, and others from the Charleston Angler store, Captain Jimmy Bell, Lindsey Young, and Tom McCord.

On May 18, a Conservation Celebration at preserved Indigo Farms celebrated the annual dedication of the **Legacy Live Oaks** that had been planted. The guest speaker was Dana Beach of the South Carolina Coastal Conservation League.

An essential part of EIOLT's education mission, the annual "Back to Nature" event promotes public awareness of land conservation through outings on protected properties. "Back to Nature 2008" was

a resounding success thanks to the generosity of the tour leaders, the hard work of EIOLT volunteers, the landowners who allowed access to their properties, and artist Bonnie Lee, who did the official portrait of the event's painted bunting. The event was underwritten by



Nature Day 2008.



Charles Lane

Lane Named "Hero of Conservation"

A Charleston man who championed the ACE Basic Project and serves on the ACE Basin Task Force has been named one of *Field & Stream's* 2008 "Heroes of Conservation." "Wetlands Warrior" Charles Lane is one of seven people

nationally to be honored for their conservation work. The "Heroes," who will be featured in the October 2008 issue, will receive \$5,000 each from Toyota to support their conservation projects. Charles has announced that he will donate his grant to the Edisto Island Open Land Trust to assist in our proactive conservation work.

Greenbelt Bank a Godsend

(Continued from page 1)

This year, the Greenbelt Bank Board has awarded EIOLT three grants totaling \$1,640,000 to purchase conservation easements on Paradise Shrimp Farm (505 acres), the "Keefe Farm" (70 acres) and the "Polk Farm" (74 acres). Keefe and Polk will close in late 2008. Lowcountry Open Land Trust has also been awarded several Greenbelt grants in 2008 for easements on Edisto tracts.



EDISTO ISLAND OPEN LAND TRUST

BOARD OF TRUSTEES

Robert E. Lee, Jr.,
President
Dr. Richard C. Hagerty,
Vice-President
Alexander S. Crawford, Jr.,
Secretary
Fisher C. Walter, Jr.,
Treasurer
Richard Lane Brown, III
Charles E. Callahan
Pamela G. Jacobs
James O. Kempson
David L. Lybrand
I. Jenkins Mikell, Jr.
Chalmers W. Poston, Jr.
Nancy M. Sandel
Sue Hay Thornton
Ellen E. Unger

STAFF

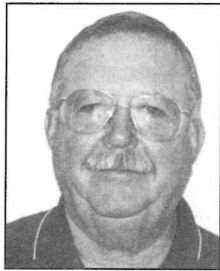
Marian D. Brailsford,
Executive Director
Jan Turner,
Director of Development
Ida Tipton, Office Manager
Randy Kelley, Office Assistant

547 Highway 174, Suite 7
Post Office Box 1
Edisto Island, SC 29438

Phone: (843) 869-9004
Fax: (843) 869-7820
Email: eiolt@bellsouth.net
Website: www.edisto.org

A SPONSOR MEMBER OF THE

LAND TRUST ALLIANCE



FROM THE PRESIDENT

The Edisto Island Open Land Trust has come a long way in the last five years. Since 2003, our **membership has doubled** and **members' financial support has tripled**. In 2003, we closed one conservation easement. Last year, we closed **11 conservation easements**. Recently, we conserved our **biggest tract of land ever**, the 505-acre Paradise Shrimp Farm.

"THANK YOU!" for your continuing support during the last five years. Our organization is now in the final stages of the Land Trust Alliance (LTA) accreditation application process. We hope to be **one of the first fully-accredited land trusts in the country** – a process that began with an extensive organizational assessment in 2005 and recently included the submission of a pre-application. "Thank you" to all who have helped in this process.

A final note: in these trying financial times, please **remember the importance of EIOLT's work and give generously**. Your gift will do much to ensure that Edisto Island remains as pristine in the future as it is today.

Thank you,

BoBo

Robert E. Lee, Jr., President



FROM THE EXECUTIVE DIRECTOR

A favorite quote of mine is, *"We do not inherit the earth from our ancestors, we borrow it from our children."* When we borrow something – a book, for example – we treat it with respect. We don't write in the margins and we are careful not to spill snacks on the pages. We return it in the condition it was received, because we care about the future enjoyment of the book by others.

As an EIOLT member, you have proven that you are a responsible "borrower" of Edisto's natural treasures. However the "living close to nature" quality of life we want to pass on to our children is still threatened by global climate change, by greed, but most of all by apathy. Our society is so fixated on material comforts and conveniences that we fall short in making the sacrifices that will ensure our children's natural legacy. What is this "wonder-full" legacy that you and other EIOLT members are creating? It is catching fish and harvesting crabs in a clean-water creek, sharing the beauty of a marsh sunset with egrets, sitting in a deep woods and hearing only bird song, breathing unpolluted air, and reveling in a brilliantly starry night sky.

Even in tough economic times, our members' financial support has held steady – and many have increased their level of giving! With the challenges ahead, your support is more important than ever. So keep believing in our work. Teach your kids and grandkids respect for our natural resources. Turn out the lights. Drive a hybrid car. Eat locally-grown food. And be an active part of a community movement that is passionately working to save a very special place.

Thank you,

Marian Brailsford

SAVE THESE DATES!

EIOLT EVENTS

For details: www.edisto.org or (843) 869-9004

2008

Nov. 16 Oyster Roast & Annual Meeting,
2 p.m., Sand Creek Farm

Nov. 18 Corridor Management Plan Unveiling, 7 p.m.,
New First Baptist Church

2009

March Edisto Pride Great American Cleanup Spring
Campaign

May "Back to Nature" Outings and Legacy Live
Oak Dedication



Honor Roll of Contributors (Cont'd)

SEPTEMBER 2007 - SEPTEMBER 2008

HONOR AND MEMORIAL GIFTS +

of Lynn & Scott's 50th Anniversary
 it from Lynn Bagnal
 y of Shirley D. Barker
 llen & Dr. T. E. Barker
 y of Dianne S. Barton
 D. Barton
 y of Susan Elizabeth "Betty" Belser
 ney A. Gauthreaux
 arroll Belser
 y of Rodney Bridge
 Fender
 y of Tom Callahan
 enise Kempson
 Nancy Sandel
 y of Maggie Campbell
 Im
 y of Florence E. Cole
 ish Cole
 . Walt & Jeannie Dailey
 & Carol Rauch
 si & Pitanieuo Families
 aites
 y of Feaster & Ruby Coleman
 L. Coleman
 y of Alex Crawford
 cLeod & Frances R. Butler
 rs. Charles E. Corley, III
 . B. Drury
 Charlotte Fairey
 . Fishburne, Jr.
 Lynn Hills
 rs. G. Preston Hipp
 rs. James Kempson
 G. Lane
 Lane, Jr.
 rs. Philip S. Minges
 Elaine Neff
 ris & Deb Cameron
 rs. I. Jenkins Mikell, Jr.
 Juliana Pinckney

Elizabeth deRosset Prioleau
 Tom & Jackie Roche
 Jeanne Des Smith
 Grace & Gerard Stelling
 Mr. & Mrs. Timothy Street
 Mr. & Mrs. W. F. Thompson, Jr.
 Nancy Carol Tipton
 Dr. Perry E. Trouche
 Mr. & Mrs. H. Wayne Unger, Jr.
 Theodora G. Warren
 Colonel George K. Webb
 In memory of Lynda Corbett Dabbs
 Bill Dabbs
 In memory of Alfred Ellington
 Dianne Jordan
 Conyers Norwood
 In memory of Paul Michael Fripp
 Darby, Gerald, & Thomas Holley
 In memory of Paul Michael & Scott Fripp
 Mr. & Mrs. Robert L. A. Smith
 In memory of Anna Gaddy
 Robert & Beverly Sandifer & Family
 In memory of James O. "Pete" Gordon
 Judy Gordon
 In honor of our grandsons Sam, Alex & Austin
 Bo & Pam Hawkins
 In honor of Jean & Dean Harrigal's Anniversary
 To Dean from Jean Harrigal
 In memory of Margaret Hill
 Ann Mikell
 In memory of James Hinkle
 Tom & Nancy Sandel
 In memory of Lori Foster Holley
 Jim & Marian Brailsford
 Island Cove Property Owners Association
 Eddie & Mimi Wertz
 In memory of McNeil Jones
 Jennie Ariail
 In memory of Mary Rutledge Johnston
 Lantz
 E. M. Blue's Sons, Inc.

Mr. & Mrs. Timothy Brown
 Rebecca Cazana
 Alma Lantz Jones & Linda Lantz Lockard
 Ann E. Mitchell
 Andy Ruhlin
 Amy Savery
 Cathy & Keith Shockley
 Charles & Anne Walters
 In honor of Robert E. Lee, Jr.'s Birthday
 Jim & Marian Brailsford
 Pat & Jeff Neumann
 In memory of Doris Lucas
 Peggy Fender
 In honor of Murray & Faith McCollum
 Jane & Ed McCollum
 In honor of Caroline Coward McIntosh
 Ira E. Coward, II
 In honor of Jessica & Darren McMullen
 Michael & Patricia McMullen
 In memory of William Joseph Mealing
 Margaret Hill & Betty Taylor
 In memory of Caroline S. Mikell
 Ginger & Roy McLaurin
 In memory of Issac Jenkins Mikell, M.D.
 Pinkey Vinning Mikell
 In memory of Binky Mitchell
 Lloyd Mitchell
 In memory of Robert F. Morris
 Kirby S. Tupper
 In memory of Julia Morrison
 Mr. & Mrs. James O. Kempson
 Mr. & Mrs. I. Jenkins Mikell, Jr.
 Mr. & Mrs. William F. Thompson, Jr.
 Mr. & Mrs. H. Wayne Unger, Jr.
 In memory of Faith & Chalmers Murray
 Jane & Ed McCollum
 In memory of John Myers
 Bob & Beverly Sandifer
 In honor of Capt. Chris Patterson
 back from Iraq
 Sue & Eddie Wooten

In memory of Gordon Scott
 Margaret Hill
 In memory of Robert E. Scott, Jr.
 Louise T. Scott
 In memory of Emily Seabrook
 Mr. & Mrs. H. Wayne Unger, Jr.
 Betsy & Jim Young
 In memory of Phil Sears
 Patricia H. Bundy
 Tracy S. Cariton
 Deborah Drotor
 Carole Dunlap
 Ann J. Gunter
 Elizabeth F. Hopkins
 Doug & Lorena James
 Ann Blagg Lewis
 Carol Y. Lumplin
 Sylvia O'Boyle
 Courtney Peacock-Wolfe
 Jan Branch Peterson
 Debbie Samples
 Debra W. Scott
 Deborah P. Thomas
 In memory of Susan M. Smith
 Sonya & Grant Goodman
 In memory of Gertie Taylor
 Margaret Hill & Betty Taylor
 In memory of Beth Tennant
 Peggy Fender
 In memory of Wallace Trowell
 Amy U. Trowell
 In honor of hospitality of Rose B. Turner
 Thaddeus E. & Carolyn T. Kelly
 In memory of Dr. William Upshur
 Jennie Ariail
 In memory of J. Otto Warren, Jr.
 Mildred J. Warren
 In memory of Bohler Whitemire
 Margaret Hill & Betty Taylor
 In memory of Xanadu
 Bert Moorman

FOUNDATIONS, ORGANIZATIONS, AGENCIES

rd & Dorothy Donnelley Foundation
 olina Conservation Bank
 n County Greenbelt bank

Sunshine Foundation
 Jane Edwards Elementary School
 Town of Edisto Beach

Land Trust Alliance
 Wayland H. Cato, Jr. Foundation, Inc.
 Norcross Wildlife Foundation, Inc.

The Osprey Foundation -
 Anne Rivers Siddons
 South Carolina Dept of Transportation

LEGACY LIVE OAK CONTRIBUTORS (PHASE VII 2008)

y of Philip Sears
 Bill Twaler

In Memory of M. "Buddy" Moredock
 Lillie "Sis" Moredock

In Memory of Ralph C. Brown
 Curt & Lori Brown

See the complete list of Legacy Live Oak
 contributors at www.edisto.org

BUSINESSES AND CORPORATIONS

2008 PREMIER CORPORATE SPONSOR (\$10,000+) Edisto Sales & Rentals Realty, LLC - Matthew K. Kizer, 1405 Palmetto Blvd., Edisto Island, SC 29438 (843) 869-2527

Benefactors (\$5,000- \$9,999)

Ocean Ridge, Property Owners
 tion & Wyndham Architectural
 Board

raser & Cone Attorneys at Law

Walterboro

Allies (\$2,500 - \$4,999)

ods & Waters Realty

tin Appraisals & Forestry Inc.

Bank of South Carolina

it, Walterboro & Edisto Island

rk Group LLC

Business Partners (\$1,000 - \$2,499)

Hoover Chrysler Jeep

The Huffines Company LLC

Little Britton Tree Farm

Paradise Shrimp Farms

Ravenel & Associates, Inc.

Prudential Kapp/Lyons Realty

Walter Construction Company

Business Sponsors (\$500 - \$999)

Atwood Vacations & Realty

Robert Frank Land Surveying

Longleaf Holdings, LLC

Business Members (\$100 - \$499)

Amtec Control Integration Company

Anderson Well Drilling

Lynn Benton Bagnal Interior Design

Bank of Walterboro

Barr, Unger & McIntosh, LLC

Belser Thompson Real Estate

Carolina Appraisal Group of Charleston

Cattails Floral Design/

Cleaner Concepts LLC

Charleston Glass Company

Coldwell Banker - Sea Island Realty

Business Members (\$100 - \$499)

First Federal of South Carolina

Griffin, Beach & Co., PA

The Guerry Group

Cindy Hartpence, Realtor

Herndon Insurance Agency, Inc.

Terry Hoff Construction

Island Mattress

J. Sam Plexico & Associates

King's Market

Charlotte Main, Realtor

Marsh Bluff Maintenance & Repairs

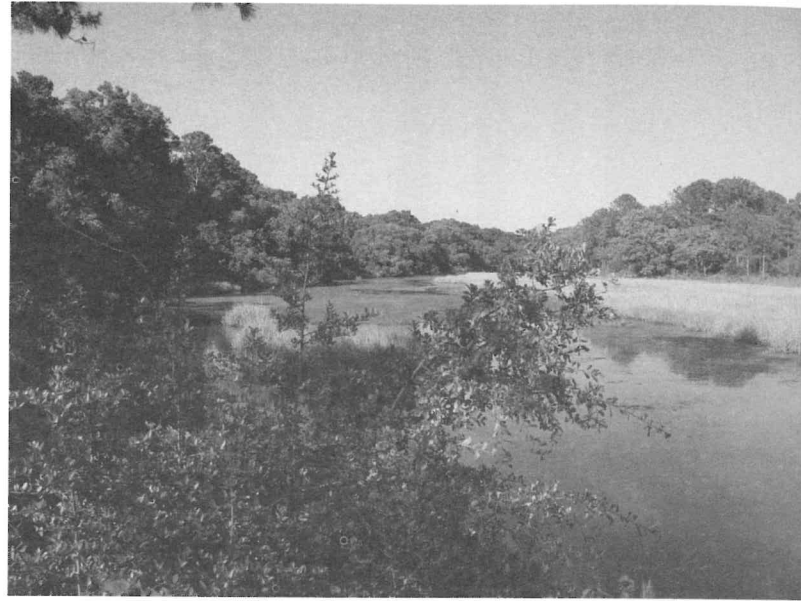
EIOLT Joins the ACE Basin Task Force

The **ACE Basin Project**, one of the most successful conservation projects in the world, also is designated as a world class ecosystem under The Nature Conservancy's "Last Great Places" program. It is one of the largest intact coastal ecosystems and undeveloped estuaries on the East Coast and it is the place that Edisto Island calls home. Altogether, the Basin includes 350,000 acres of delta lands fed by the Ashepoo, Combahee and Edisto (ACE) rivers.

The **ACE Basin Task Force** – including its newest partner, EIOLT – is a coalition of Lowcountry conservation organizations and agencies responsible for preserving more than 175,000 acres in the Basin. Task Force membership is not only an honor for EIOLT but it will likely speed the pace of conservation on Edisto Island through increased collaboration and partnering.

The project was launched in 1988 when Ducks Unlimited, The Nature Conservancy, the South Carolina Department of Natural Resources, the U.S. Fish and Wildlife Service, and private landowners formed the ACE Basin Task Force. Ten years later, Westvaco Corporation, the Lowcountry Open Land Trust and Nemours Wildlife Foundation joined. This year, EIOLT was pleased to get the invitation.

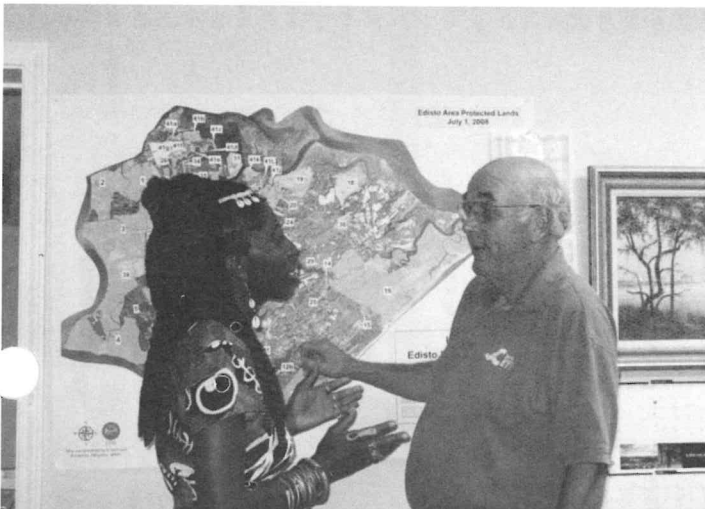
EIOLT members can be proud that their land trust will be involved in shaping the future of the ACE Basin while protecting Edisto Island. For more information about the ACE Basin's bio-diversity, visit EIOLT's website at www.edisto.org.



Scenic 174 Corridor Management Plan: Experience the "Soul of Edisto" on Nov. 18

After more than a year and a half of effort, the Scenic 174 Corridor Management Plan (CMP) is finished! Created by and for the Edisto community, the CMP is a working tool with a blueprint for preserving Edisto's cultural and natural heritage. It also will help ensure Edisto's unique quality of life and assist in creating economic opportunity for islanders.

You can check it out at the *Corridor Management Plan Unveiling*, 7 p.m. Tuesday, Nov. 18, at New First Baptist Church (1644 Highway 174). Come see and hear all about the CMP goals and the plan for Edisto's future. Enjoy refreshments and find out how you can get involved.



Highlights

CMP Past: In late 2006, a Scenic 174 Coalition of representatives from a cross-section of community organizations was created, spearheaded by EIOLT. Several public meetings provided a forum for discussion and the Edisto community completed a survey of their opinions about the corridor's future. Volunteers from the community were given digital cameras to capture significant island features. Clemson University's Jim Self Center on the Future then created an inventory of natural and historical attributes, and a professional writer edited the Coalition's drafts and created the final CMP for publication.

CMP Future: The CMP is being submitted with an application for National Scenic Byway designation for Edisto's Scenic Highway 174. With this designation, the implementation of the

Honor Roll of Contributors

SEPTEMBER 2007 - SEPTEMBER 2008

PALMETTO \$5,000 +

Charles & Virginia Lane

Mr. & Mrs. Michael David Low

Dorothy A. Poston

Lee & Dorothy Thomas

BLUE HERON \$2,500 - \$4,999

Dr. & Mrs. John Graham

Dr. & Mrs. Richard C. Hagerty

Pam & Michael MacCorquodale

Burnet R. Maybank III

Dr. & Mrs. Larry Schmitz

DAWHOO \$1,000 - \$2,499

Carroll & Terry Griffin

Dr. & Mrs. Steven J. Jacobs

Dr. & Mrs. Dallas W. Lovelace, III

Lillie F. Moredock

Jamie & Carolyn Tupper

Charles F. Harenza

Larkin & Nancy Jennings

Mr. & Mrs. David L. Lybrand

Steven & Maria Mungo

Nancy Tyler

Dr. & Mrs. Donald L. Hartman

Jerome & Marie Bost Kizer

Mr. & Mrs. Dave Martin

George & Jane Phinney

Robert W. Underwood

Tom Hutto & Barbara Neale

Caroline Laney

Dr. & Mrs. J. Ted Melchers, III

Martha & Steve Smith

Fisher & Cindy Walter

INDIGO \$500 - \$999

Bob & Sara Cook

Richard & Keellie Garbee

Mr. & Mrs. Robert E. Lee, Jr.

Be & Jamealy Moore

Mr. & Mrs. Henry B. Smythe, Jr.

Lena & Joel Cox

Dr. Sidney A. Gauthreaux & Carroll Belser

W. Theo Mattison

Bonnie Pence

Emily Spearman

Jim & Cheryl Coyle

H. Anthony Ittleson

Jack & Cathy McWhorter

Bill & Sheila Prezzano

Bobby & Shana Stockton

Tom & Kathy Daly

Juanita & Ken Johns

John & Eliza Messersmith

Bob & Jo Ringer

Virgil & Nancy Thrash

Mr. & Mrs. Henry H. Dorn, Jr.

Harry & Mary Johnson

Mr. & Mrs. I. Jenkins Mikell, Jr.

Sandy & Carol Sanders

Dr. Gail Hall Walker

Thomas A. Edens, III

Mr. & Mrs. James O. Kempson, Jr.

Mr. & Mrs. Pinkney Mikell

Prudence S. Scott & Ms. Jennifer S. Haas

Charles & Jean Watson

Charles & Jean Watson

DOLPHIN \$250 - \$499

Lex & Anne Crawford

John & Sandye Franklin

R. Walter Hundley

Mary Miller & Mark Lofgren

Robert M & Beverly G. Sandifer

Mr. & Mrs. Robert G. Currin, Jr.

Mr. & Mrs. Adam Freeze

Ferris K. Joyner & D. C. Riggs

Rev. Wesley Moore, Sr.

David & Nella Schools

Johnny & Catherine Douglass

Pam & Ed Frost

Haynes & Arlene Kendall

R. Bruce Shaw

Will & Penelope Wright

E. F. "Dinks" Du Pree, Jr.

Richard E. & Dallas Garbee

Dr. W. Knox Kinlaw, Jr.

Jim & Linda Murray

Dick & Donna Smiley

Nela & Walter Edgar

David & Kristin Gile

John I. & Sallie K. Kirven

Chris & Stephany Muth

Bob & Debbie Spratlin

Blit & Lisa Edwards

Sonya & Grant Goodman

Mr. & Mrs. D. W. Newton

Dr. & Mrs. D. W. Newton

Preston Stockton

Carolyn & Chuck Eisenhardt, Jr.

Cal & Prissy Griffin

Mr. & Mrs. Clinton Lemon

Shelagh & Dennis North-Coombes

Becky & Dick Stoever

David & Faye Ellis

Gus & Trisha Gustafson

Betty Lilly

Kay & Doug Overby

Headen & Leigh Anne Thomas

Elias & Marian Eskew

Bo & Pamela Hawkins

Tom & Joan Mack

Richard & Diane Park

Kirby S. Tupper, III

Straut & Charlotte Fairry

John & Lynn Hills

Ed & Pat Martin

Terri & Edward Pettit

Parker Tuten

Jayne & Billy Fort

Lynn Holley

Hunter & Kitty McEaddy

Ann B. Rabon

Thomas W. & Drew W. Weeks

Bob & Beth Foster

Ronald E. Hoover & The Rev. Ina Hoover

Mary Waite & Peden B. McLeod

Dusty Rhodes

Cam & Elizabeth Wernitz

Bralisford & Bob Foster

Jeff & Carole Howell

I. Jenkins Mikell, III & Dr. Julia K. Mikell

Eleanor C. Rice

Henry & Virginia Woodhead

OSPREY \$100 - \$249

Gloria Cauthen

Paul & Barbara Frapp

C. Robert Jones, Jr.

Bill & Maridee McLaws

Barrie C. Ross

Marla & Mike Chaliff

Jane & Aubrey Gantt

Gerald & Cheryl Jones

Harriet McMaster

Van Leer Rowe

Dr. & Mrs. Lawrence R. Chewning, Jr.

Dr. Alan M. Gardner

R. Stan & Deanna T. Jones

Michael & Patricia McMullen

Mr. & Mrs. Charles Rowland

Helen & N. Heyward Clarkson

Beisy & Rick Garrick

Dianne Jordan

Jack Meadors

Jill & Tom Ruppel

Taylor & Karen Clarkson

Jim & Harriet Gettys

John & Pat Keating

Antony M. Merck

Mr. & Mrs. Donald L. Tipton

Whit & Sandi Cline

Phyllis Giese

Joseph J. Keenan, Jr.

Mr. & Mrs. Lloyd Merritt, Jr.

Alice & Gus Tucker

Joan & Howell Glyborne

Mr. & Mrs. Robert A. Godwin

Paul & Barbara Kehle

Jean & J. B. Miller

Tom & Nancy Sandel

Pat & Gena Cofer

Mark & Lisa Greenslit

David & Susan King

Lloyd Mitchell

Douglas H. Sass

Harold & Carole Ann Coggins

W. Wallace & Dianne H. Gregory

Florence & Wilbur Kizer

Marion & Sarah Mitchell

Mr. & Mrs. Herbert R. Sass, III

David W. & Kimberly Coleman

Reeves & Gail Gressette

Ken & Marsha Korpany

Dr. & Mrs. Wayne Mixon

Drs. Beth Lawson & Larry Schmidt

Ann Coward - Coward Family Ltd Partnership

Doug & Debbie Grier

Charles & Perrin Kreidler

Joe & Annette Mole

Louise T. Scott

Kathy & George Cowles

Amanda Griffith

Dorothy H. LaFitte

H. W. Moore, Jr.

Dr. Robert M. Scoville

Buddy & Jeannette Craig

Mr. & Mrs. Richard B. Grimball

Charles & Virginia Lane

Mr. & Mrs. John H. Moorman, Jr.

Harold & Kay Scruggs

Timly Craig

Jimmy Guthrie, III

Hugh C. Lane, Jr.

Jack & Connie Mulleady

Mr. & Mrs. Rick Shepard

Barbara Gould/Haram & Gerald Haram

Bonner Altman & .wrence

Dudley & Ann Myers

Anne C. Sherman

Anne C. Sherman

ginia Crooks

er G. Wallace

er G. Wallace

er G. Wallace

er G. Wallace

er G. Wallace

er G. Wallace

er G. Wallace

er G. Wallace

er G. Wallace

er G. Wallace

er G. Wallace

er G. Wallace

er G. Wallace

er G. Wallace

er G. Wallace

er G. Wallace

er G. Wallace

er G. Wallace

er G. Wallace

er G. Wallace

er G. Wallace

er G. Wallace

er G. Wallace

er G. Wallace

er G. Wallace

er G. Wallace

er G. Wallace

er G. Wallace

er G. Wallace

dwin, Jr.	Dr. Rosalie & William Crouch Bill Debbs Dr. Thomas S. Davant Mahnalee & Bill Davies Murray L. & Jo Davis Patsy & Paul De Borde Cynthia Ann Dennis Mr. & Mrs. Charles W. H. Dodge Ruth Drucker, Esq. & Andrew Drucker, Esq. Bill & Claudia DuBose Richard C. Dwight Judge Doyet A. Early, III Janie & Walter Edwards Bob & Suzi Ellledge Mr. & Mrs. Patrick J. Flannery Dr. & Mrs. Joseph F. Flowers Al & Nora Floyd BeBo & Shirley Flynn George Fontaine, Jr. Carol & Jim Fowles Bubba & Mary Ann Foy Julia Frierson Robert & Suzanne Frierson	Jean & Dean Harrigal Ben & Guerry Harris Charley & Lois Hasty Richard F. Hendry Robert A. Herlihy, AIA Eric & Ellen Herrin Batson Hewitt Jim & Jackie Hill William L. "Sam" Hiott, Jr. Henry & Sharon Hixson John Adams Hodge John & Linda Hodgson Pam & Rusty Hodnett Bill & Liz Hood Judy & Bubba Hope Mike & Ann Hutto G. L. & Judi Inabinet Jack & Billie Jackson Jerral & Gail Jernigan Jordy & Libba Johnson Ray & Linda Johnson Todd & Paige Johnson Dr. & Mrs. John B. Johnston	Becky & Ben Lawrence Edward C. (Corky) Lee Pat & Jerry Levi Catherine & Gordon Locatis Rev. & Mrs. William S. Logan Patricia Dod Lolas Jake & Duck Lomas Joe & Ann Low Mary H. Madge Eric & Catherine Main Bob & Sandra Marshburn James F. & Betsy R. Martin D. Laverne & Anne Mattox Mr. & Mrs. David Maybank, III Norma & John McAlhany Al & Katey McCormack Mr. & Mrs. W. H. (Hugh) McCown, Jr. Dr. Alla Jesse McCutchen Amy & Malloy McEachin Marilyn & Lawrence McGowan John & Jean McIlwain Sally & Bob McKenzie Ginger & Roy McLaurin	Greta Little & Joel Myerson Mr. & Mrs. H. Zach Nabers, III Pat & Jeff Neumann Dr. & Mrs. Thomas Newland Kerry & Lynn Nickerson Nancy D. Nickles Karen Nickless & Stephen E. Rothrock Conyers Norwood Kyle & Susan W. Osteen Fred Palm Jay & Mary Ann Palmer Dan Parker Mr. & Mrs. E. Horry Parker Michael T. Parker Ted & Brooke Parker Georgianna Graham & Ken Parnell Mr. & Mrs. Stan Pauls Mr. & Mrs. Edgar J. T. Parrow Mr. & Mrs. H. M. Persinger, Jr. Rick & Barb Pison Thomas M. Richardson Mary & Tommy Rivers Renee & Randy Romberger	Harry & Ann Sherman Tom, Jon & Kay Siddall Mr. & Mrs. Walter A. Sigman, Jr. Mr. & Mrs. George E. Simmons Cotesworth P. Simons Betsy & Ben Skardon Barry Smith Dr. & Mrs. Claude W. Smith, Jr. Everett & Joan Smith Greg & Karyn Smith Henry & Betty Anne Smith Bill & Joy Snyder Ronnie & Martha Sparks Jim & Denise Spears Laura Staat Jason & Tiffany Stapleton Emelia & Jim Stephenson Mr. & Mrs. John M. Stover Leslie & Kenny Stuck Mr. & Mrs. Norman B. Stuckey Don Sumner Dr. Roslyn Donny Taylor John J. Tecklenburg	George & Gaihya Walter Mildred Warren Mr. & Mrs. Claude A. Watson, III Dr. Frederick G. Wearn Eddie & Mimi Wernitz Robert & Brenda Whitesides Windell Wilkins & Wanda McCarley Billy & Dannette Williams Sally & Doug Williams Nancy M. Williams Marsh & Lynn Willis Sara Nell & Spence Wise Rhett & Kent Wolfe Allen & Becky Woods Robert & Doris Woods Betsy & Jim Young
-----------	------------------------------------------------------------------------------------------------------------------------------------------------------------------------------------------------------------------------------------------------------------------------------------------------------------------------------------------------------------------------------------------------------------------------------------------------------------------------------------------------------------------------------------------------------------------------------------------------------------------	-----------------------------------------------------------------------------------------------------------------------------------------------------------------------------------------------------------------------------------------------------------------------------------------------------------------------------------------------------------------------------------------------------------------------------------------------------------------------------------------------------------------------------------------------------------	----------------------------------------------------------------------------------------------------------------------------------------------------------------------------------------------------------------------------------------------------------------------------------------------------------------------------------------------------------------------------------------------------------------------------------------------------------------------------------------------------------------------------------------------------------------------------------------------------------------	------------------------------------------------------------------------------------------------------------------------------------------------------------------------------------------------------------------------------------------------------------------------------------------------------------------------------------------------------------------------------------------------------------------------------------------------------------------------------------------------------------------------------------------------------------------------------------------------------------------	------------------------------------------------------------------------------------------------------------------------------------------------------------------------------------------------------------------------------------------------------------------------------------------------------------------------------------------------------------------------------------------------------------------------------------------------------------------------------------------------------------------------------------------------------------------------------------------------	-------------------------------------------------------------------------------------------------------------------------------------------------------------------------------------------------------------------------------------------------------------------------------------------------------------------------------------------------------------------------------------------------------------------------

PELICAN \$50 - \$99

erman, III.	Dr. Sally Boyd Rosa & Joe Bresnahan Jim & Wendy Broome Perry & Debbie Bullard Donna R. Burrows Dr. & Mrs. T. W. Campbell, Jr. Mr. & Mrs. Thomas Cannon Mr. & Mrs. Richard H. Capps Joe & Damaris Cardisco Barbara Carmichael Trish & Alan Carothers Dan Carter Herve Certsolos Joe & Wendy Clark Shirley L. Coleman Mr. & Mrs. Elmer S. Cook Dawn Coppock Ann Coward Jim & Jacqueline Cox Chalmers & Dixie Culbreath Dr. & Mrs. Jimmy Culclasure Karen & Tippy Curtis C. M. & Cynthia Dantzer Larry & Jane Darby Edward L. Daugherty Bob & Betty Davis Mr. & Mrs. Richard M. Devers Arthur F. & Shirley S. Di Salvo	William J. Jenkins Annette K. Jenwers Shirley S. Johnson Joe & Caroline Jones Tad & Barb Jones Helen E. Jordan Mr. & Mrs. Lloyd M. Kapp Bess Kelleff Charles & Nancy Kerekes Frank & Lindy Kirk Jeff Kline Delano & Blanche Knight Gayle J. Kubala John & Peggy Kwist Angus & Cary Lafaye Bill & Susalee Lamb Bonnie & Leon Langley Tom & Frances LaRoche Wayne & Barb Leclerc Bonnie Lee & Allen Harrison Emily Lee Family Partnership Archie & Lynn Livingston Bobby & Georgette Livingston J. L. & Amy Locklair Elmer & Karen Lott Sam & Joyce Lybrand Burlley & Shirley Lyons Dr. William Maker	Dr. & Mrs. J. Neil Marshall Melody Martin Gaines H. Mason, Jr. Jennifer & Jeff Mason Tom & Shirley Mason Dr. & Mrs. Thomas F. McDonald FitzLee McEachin George C. McLees, Jr. Richard & Bobbie McNamee Mr. & Mrs. David Meal Patrick & Linda Meyer Laura W. & Tyre H. Moore Morris E. Morkre Kevin Morris Jack & Dee Moseley Chris & Richard Ness Trev & Lib Neuburger Mr. & Mrs. D. Henry Ohlandt Orlando & Louise Ojeda Cocky & Kim Oswald Joe & Debbie Padgett Olivia H. Padgett Glegg & Betty Padgett Dr. Olivia C. Palmer Brad & Kristen Peek Dr. & Mrs. J. C. Pennington Michael & Carla Pittelli Heyward & Susan Porcher	Mr. & Mrs. Jim Potter, Jr. Stephen & Kiri Rawson Jim & Kate Reed Deas Richardson John A. & Susan Ross Roberts Libby & Jim Rush Dr. & Mrs. E. W. Sanders, Jr. Carolianna Sandifer Mr. & Mrs. Phil Satterfield Mr. & Mrs. Lawrence A. Savage, Jr. Jo Schoenack Kirby & Jenny Shealy Michael & Betsy Shealy Amelia S. Shortino Ed & Sue Shrumes Spike Simmons Mr. & Mrs. E. M. (Bud) Skidmore Bob & Kathie Smith Sidney L. & Betty Ann Smith Steven D. Smith Cliff & Dixie Songer MG & Mrs. Stanhope S. Spears M. Scott Steedley E. Randall Swan, Jr. Ted & Jayne Taraski Mary & Mike Thomas Peter & Julie Thurlow Larry & Linda Tilby	Thomas L. Tiller, Jr. Amy U. Trowell Mr. & Mrs. James Truesdale Rebekah & Manning Unger Larry Vanderbilt Dede Vergot Michael & Ginnie Watson Bill & Cindy Wentz Fred Wichmann Ben & Barbara Wiggins Robert & Ariene Wilkes Seabrook Wilkinson David H. Williamson W. Marion & T. J. Wilson Ed & G-Nell Winslow David Wishart & Jo Wilson Frank & Lynn Wolpert Janet & Jay Wooster Dr. W. Curtis Worthington, Jr. Colonel William Glenn Yarborough, Jr. Mickey & Buff Yelton Bruce & Elizabeth Townsend Young
-------------	------------------------------------------------------------------------------------------------------------------------------------------------------------------------------------------------------------------------------------------------------------------------------------------------------------------------------------------------------------------------------------------------------------------------------------------------------------------------------------------------------------------------------------------------------------------------------------------------------------------------------------------------------------------------------------------------------	--------------------------------------------------------------------------------------------------------------------------------------------------------------------------------------------------------------------------------------------------------------------------------------------------------------------------------------------------------------------------------------------------------------------------------------------------------------------------------------------------------------------------------------------------------------------------------------------------------------------------------------------------------------------------------------	------------------------------------------------------------------------------------------------------------------------------------------------------------------------------------------------------------------------------------------------------------------------------------------------------------------------------------------------------------------------------------------------------------------------------------------------------------------------------------------------------------------------------------------------------------------------------------------------------------------------------------------------------------------------------------------------------------------	----------------------------------------------------------------------------------------------------------------------------------------------------------------------------------------------------------------------------------------------------------------------------------------------------------------------------------------------------------------------------------------------------------------------------------------------------------------------------------------------------------------------------------------------------------------------------------------------------------------------------------------------------------------------------------------------------------------------	-----------------------------------------------------------------------------------------------------------------------------------------------------------------------------------------------------------------------------------------------------------------------------------------------------------------------------------------------------------------------------------------------------------------------------------------------------------------------------------------------------------------------------------------------------------------------------

STUDENTS AND OTHER CONTRIBUTORS

ell	Richard & Faith Donsky Mr. P. Ferris Sally Gwin Nancy C. Godbold Helen Haltiwanger	John Kizer James E. Knight, Jr. John & Beulah Marvin Christopher J. McWhorter Ann Mikell	Bertha Wilson Moorman Mary Ann Garner Odum Dr. Richard Porcher Mary Jo Robbins Sister Carol Dulka & Sister Mary Lequier	Colton R. Seddon Cassie M. Simon Shawn A. Simon Stephen & Madeleine Strubbe William E. Walker, Jr.	Cassi Worsham
-----	------------------------------------------------------------------------------------------------	------------------------------------------------------------------------------------------------------	-------------------------------------------------------------------------------------------------------------------------------------	----------------------------------------------------------------------------------------------------------------	---------------